

Pole Foundations services and products have been developed to provide our customers with credible cost effective solutions to assist in improving overhead line network reliability and performance.



Inspection Services

Detailed line inspection techniques and post processing provided by Pole Foundations has enabled overhead line network operators to implement effective maintenance and refurbishment activities.

Our recommendations are based on a clear understanding of overhead line design and component degradation, applied in a consistent and methodical manner in order to produce cost-effective solutions.

Data Analysis

By assessing the likelihood of conductor clashing and existing wood pole strength capability the overhead line design reliability can be provided. It is important to emphasise that the optimum solution for each situation considered provides a 'fit for purpose' solution.



Business Case

With an understanding of existing reliability levels recommendations can be provided to 'design out' potential problems, which would affect future performance and reliability.

New reliability levels can be provided together with associated cost estimates for any options recommended.

Full refurbishment schedules for the individual structure positions inspected are submitted on acceptance of the Capital investment business proposal.

Service Deliverables

- Inspection data including Digital images of all structures
- Business case showing estimated costs of recommended work
- Full overhead line refurbishment schedules



overhead line inspections

WORK PROGRAM

1. Circuit Verification
2. Data Acquisition
3. Data Analysis
4. Business Case
5. Provision of Work Schedules

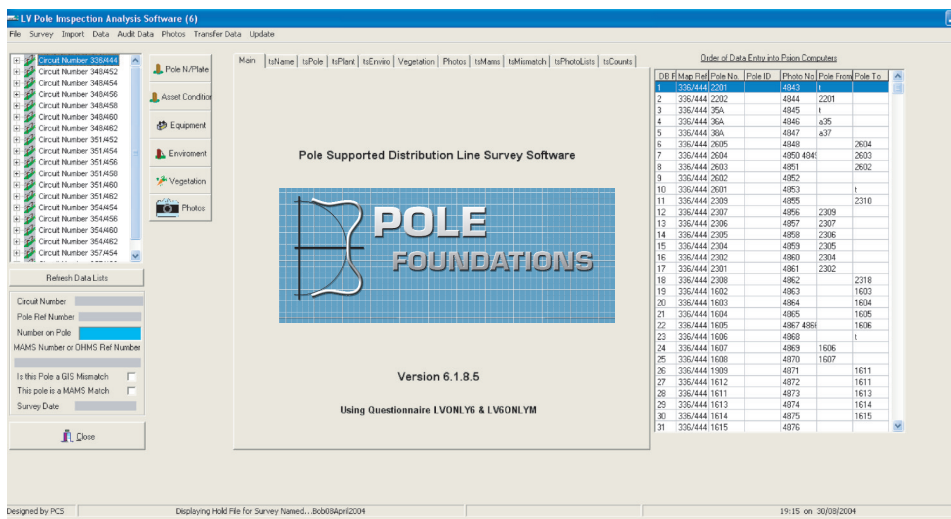
Proven ability to credibly and reliably inspect and gather data for overhead line Distribution Network Operators.



Data Collection

All Data is collected on site and downloaded into Pole Foundations software, which collates and audits the data collected by our inspectors. Digital images are cross-linked to the data, which is returned to the customer in an Access DataBase.

Software



Commitment

Pole Foundations are committed to continuously developing inspection techniques and protocols supported by our own in house data management and software systems.



LV Data Fields

- Pole Information & Condition
- Conductor Information & Condition
- ACD Information & Condition
- Insulator Information & Condition
- Earthing Information & Condition
- Stay Information & Condition
- LV Plant Information & Condition
- LV Cable Information & Condition
- Notices Information & Condition
- Ground Clearance
- Span Length
- House Services
- Street Lighting
- Ground Condition

- Environmental
- Building Clearances
- Pollution Levels
- Vegetation

overhead line inspections

